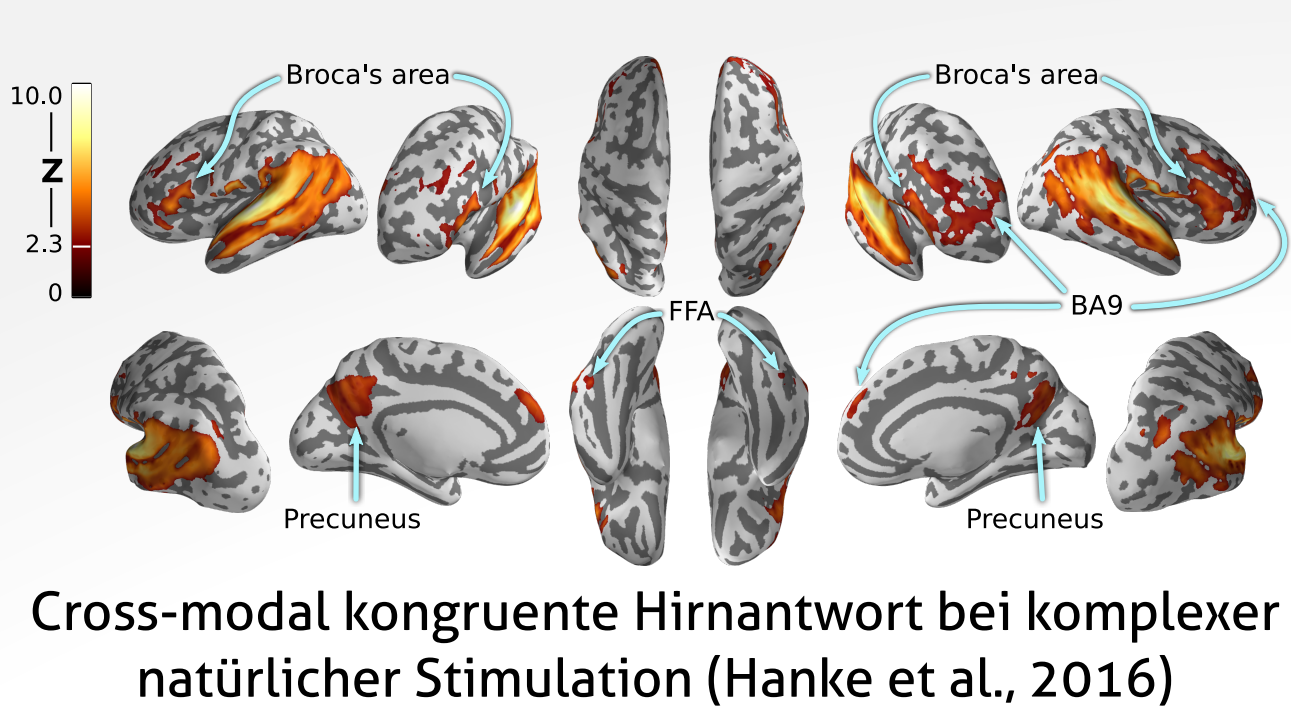
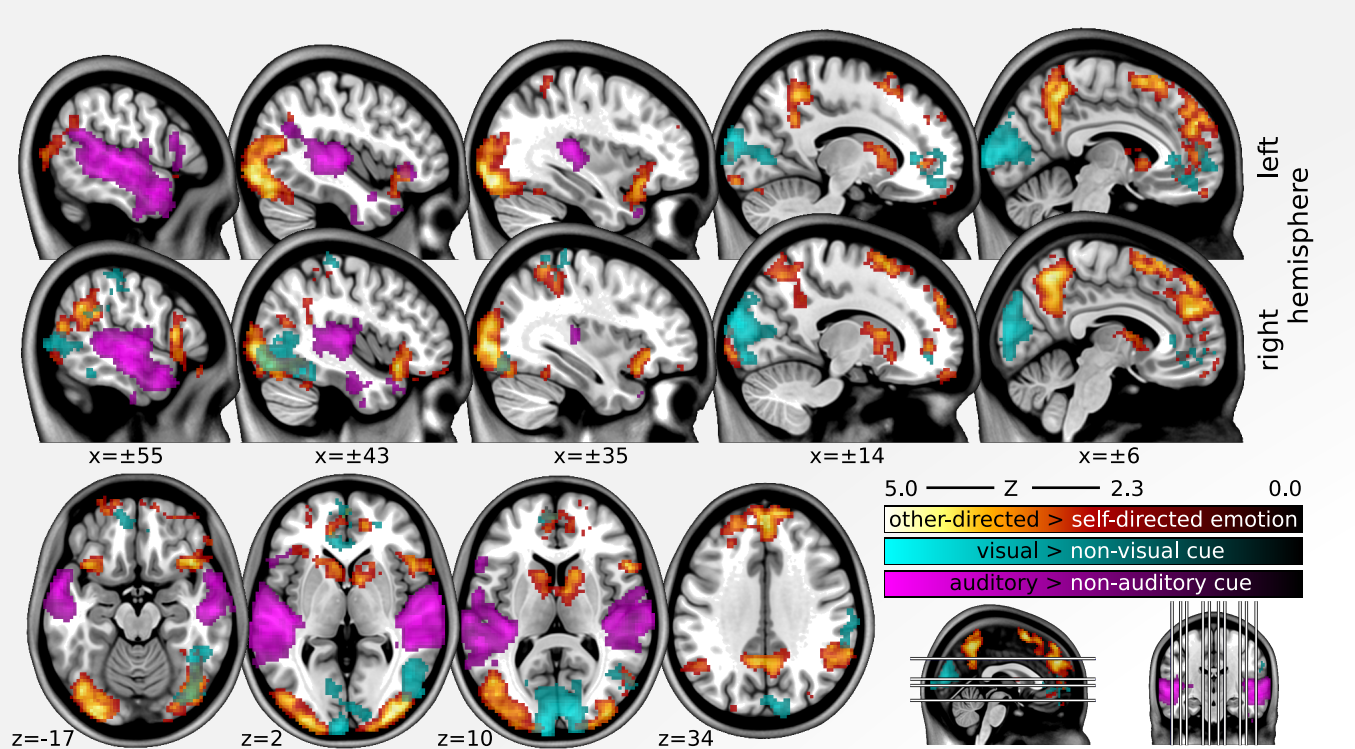
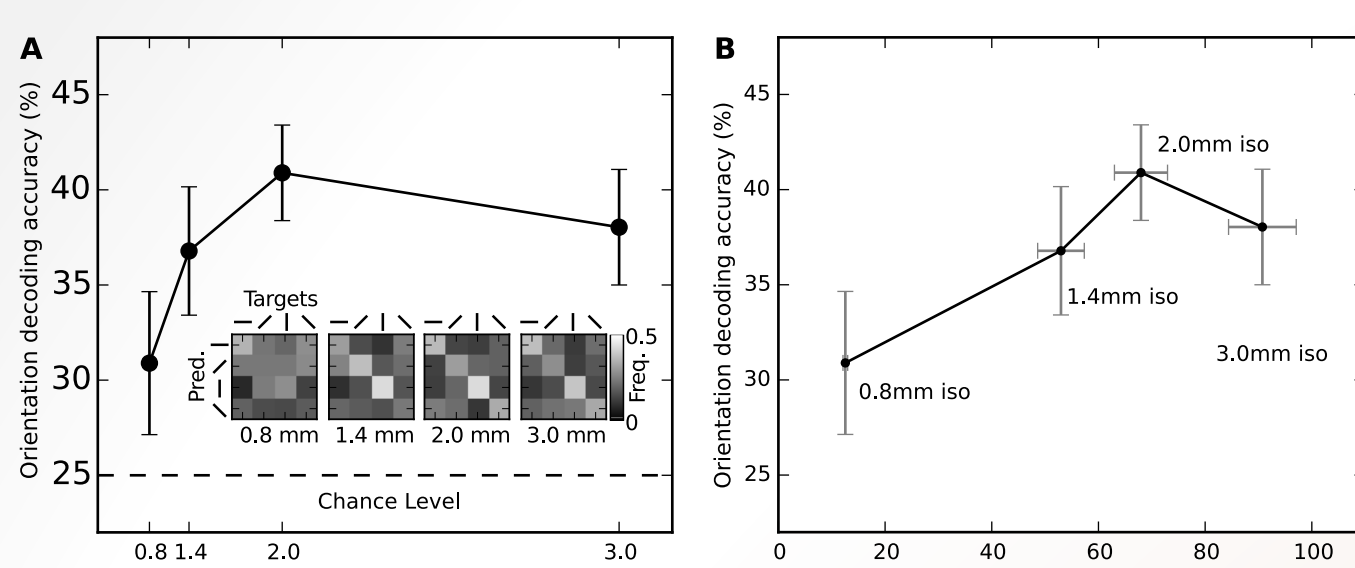


Ergebnisse direkter Kooperationen

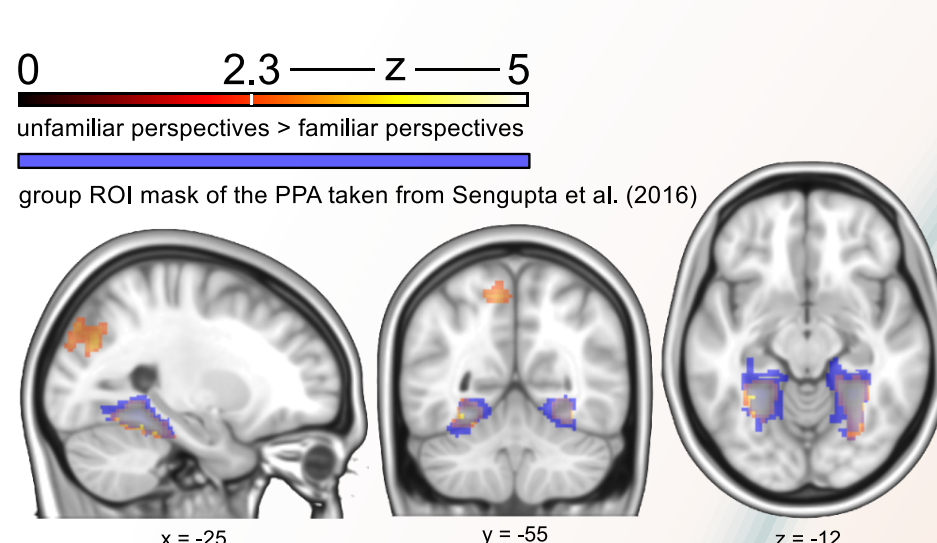


Cross-modal kongruente Hirnantwort bei komplexer natürlicher Stimulation (Hanke et al., 2016)

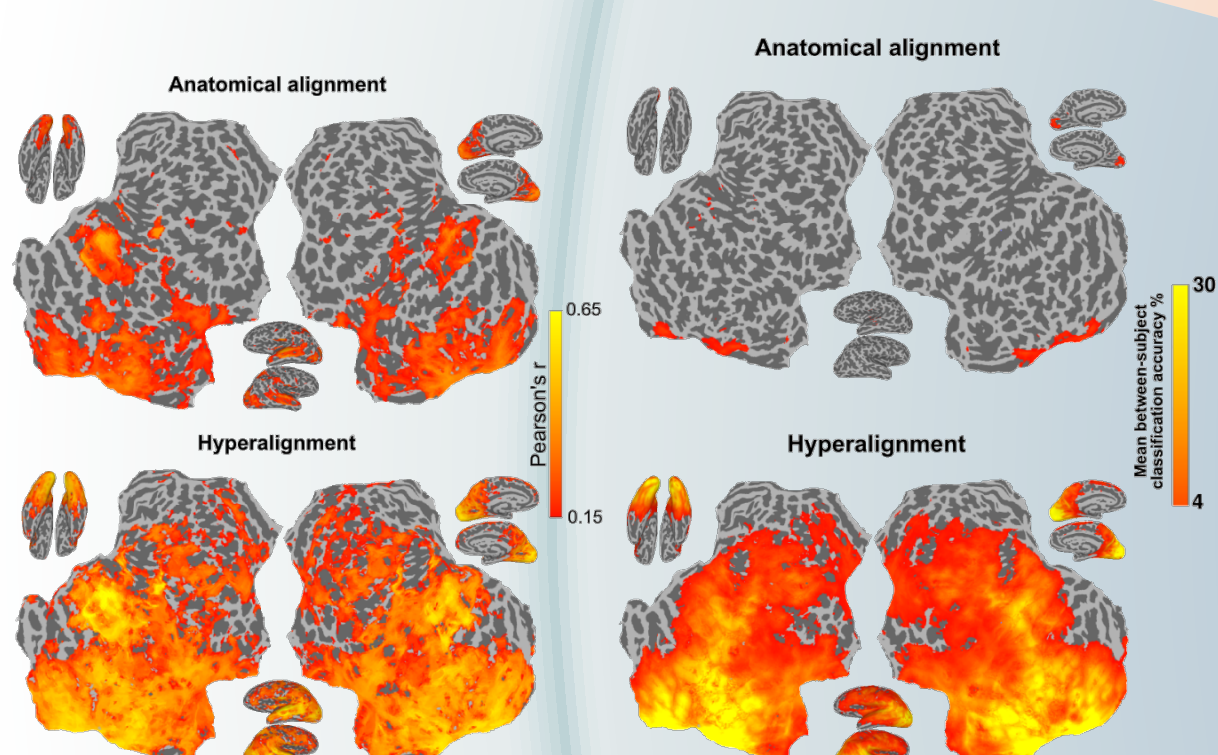
Neuronale Korrelate von Eigenschaften emotionaler Reize in komplexen natürlichen Situationen (Sengupta et al., 2016)



Einfluss von fMRT-Akquisitionsparameter auf die Dekodierbarkeit von Repräsentationen (Sengupta, 2016)

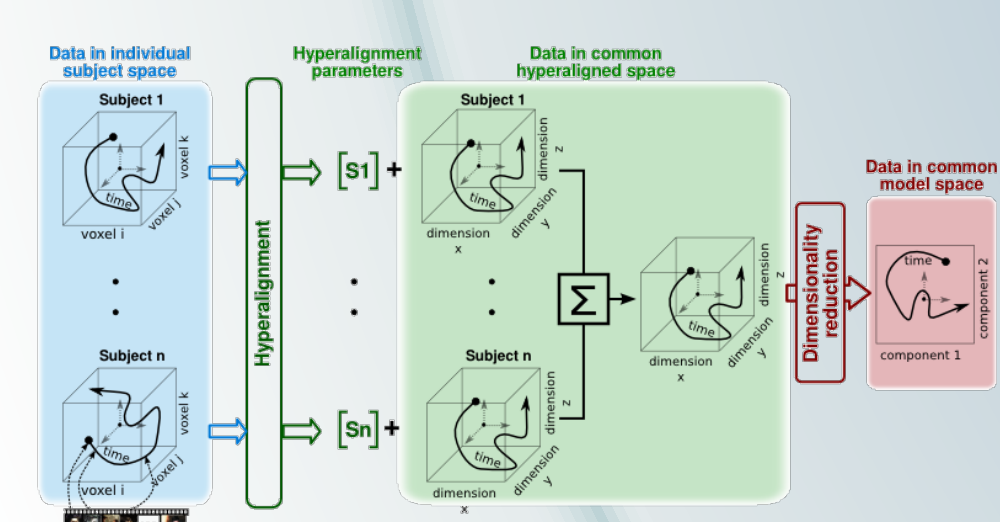


Lokalisation kortikaler Regionen ohne dedizierte Messungen (Häusler, 2016)

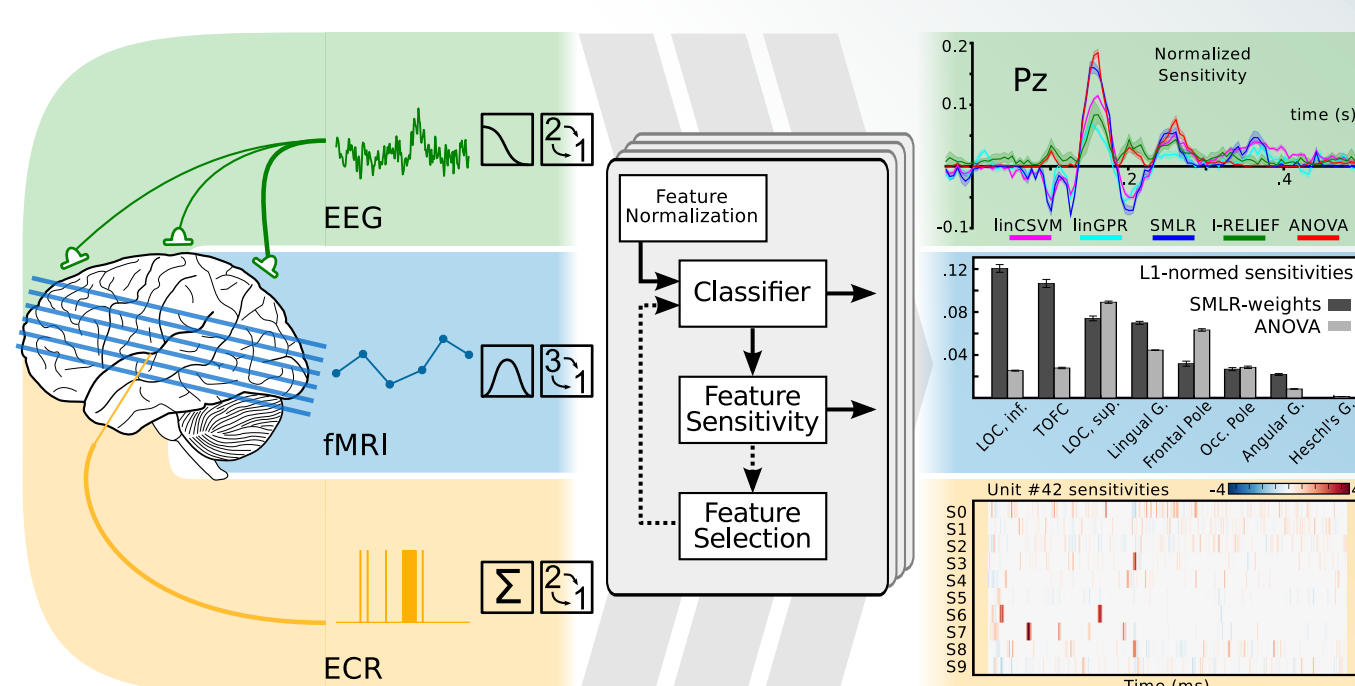


Funktionelles inter-subject alignment von Hirnaktivierungsmustern (Haxby et al., 2011; Guntupalli et al., 2016)

anwendungsbereite
Implementierungen
von Algorithmen

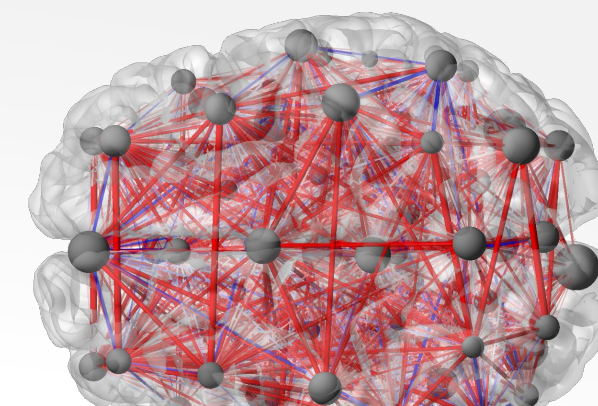


PyMVPA
<http://www.pymvpa.org>



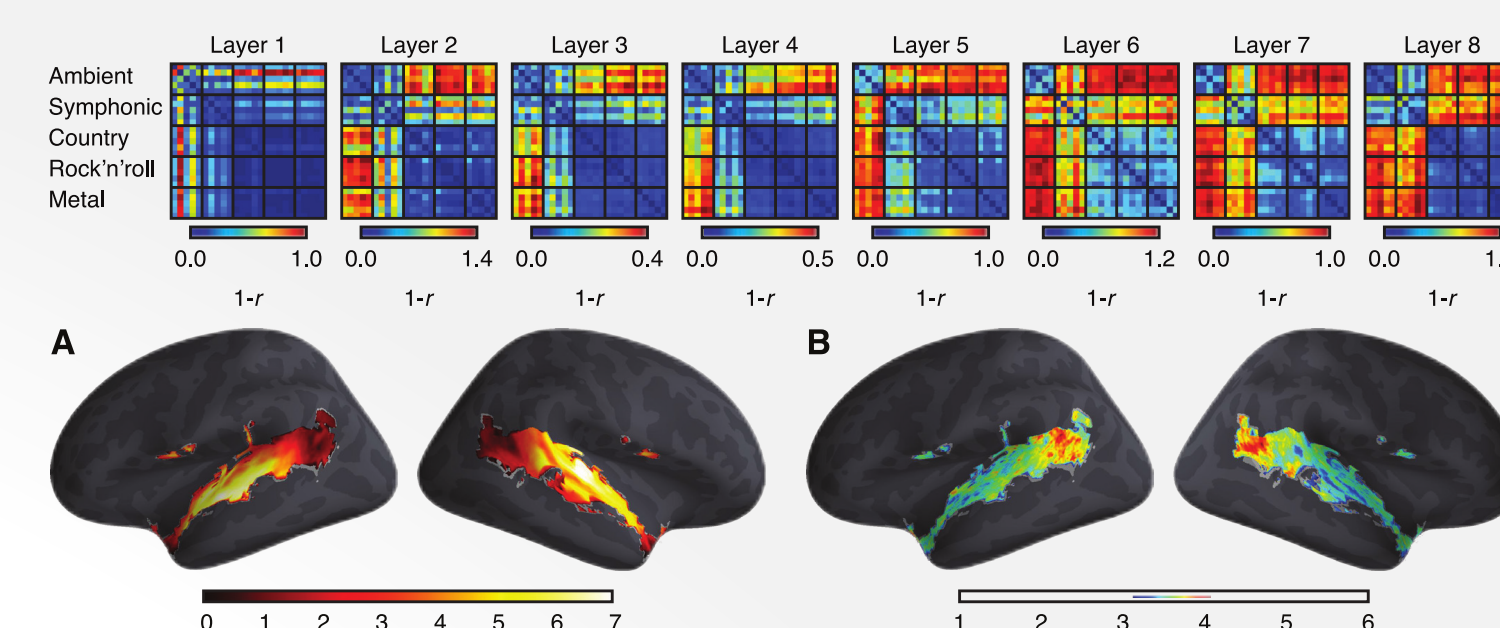
Multi-modale Datenauswertung (Hanke et al., 2009)

Anderson, M. J., Capota, M., Turek, J. S., Zhu, X., Willke, T. L., Wang, Y., ... & Norman, K. A. (2016). Enabling Factor Analysis on Thousand-Subject Neuroimaging Datasets. *arXiv:1608.04647*.
Chen, P. H. C., Chen, J., Yeshurun, Y., Hasson, U., Haxby, J., & Ramadge, P. J. (2015). A reduced-dimension fMRI shared response model. In *Advances in Neural Information Processing Systems* (pp. 460-468).
Guntupalli, J. S., Hanke, M., Halchenko, Y. O., Connolly, A. C., Ramadge, P. J., & Haxby, J. V. (2016). A Model of Representational Spaces in Human Cortex. *Cerebral Cortex*.
Güçlü, U., Thielens, J., Hanke, M., van Gerven, M. A. J. Brains on Beats. *NIPS*. Accepted for publication.
Halchenko, Y. O. & Hanke, M. (2012). Open is not enough. Let's take the next step: An integrated, community-driven computing platform for neuroscience. *Frontiers in Neuroinformatics*, 6:22.
Hanke, M., Adelhöfer, N., Kottke, D., Iacovella, V., Sengupta, A., Kaul, F. R., Nigbur, R., Waite, A. Q., Baumgartner, F. J. & Stadler, J. A studyforrest extension, simultaneous fMRI and eye gaze recordings during prolonged natural stimulation. *Scientific Data*. Accepted for publication.
Hanke, M., Ding, R., Häusler, C., Guntupalli, J. S., Casey, M., Kaul, F. R. & Stadler, J. (2015). High-resolution 7-Tesla fMRI data on the perception of musical genres – an extension to the studyforrest dataset. *F1000Research*, 4:174.
Hanke, M., Baumgartner, F. J., Ibe, P., Kaul, F. R., Pollmann, S., Speck, O., Zinke, W. & Stadler, J. (2014). A high-resolution 7-Tesla fMRI dataset from complex natural stimulation with an audio movie. *Scientific Data*, 1.
Hanke, M., Halchenko, Y. O., Sederberg, P. B., Olivetti, E., Fründ, I., Rieger, J. W., Herrmann, C. S., Haxby, J. V., Hanson, S. J. & Pollmann, S. (2009). PyMVPA: a unifying approach to the analysis of neuroscientific data. *Frontiers in Neuroinformatics*, 3:3.
Hanke, M., Halchenko, Y. O., Sederberg, P. B., Hanson, S. J., Haxby, J. V. & Pollmann, S. (2009). PyMVPA: A Python toolbox for multivariate pattern analysis of fMRI data. *Neuroinformatics*, 7, 37–53.

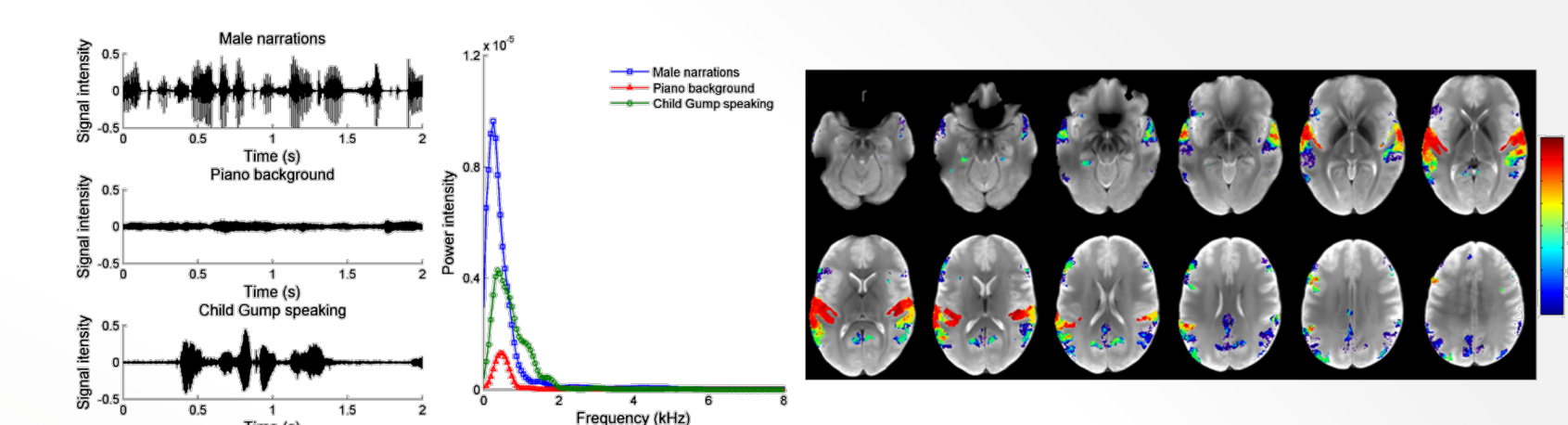


Modellierung kongruenter Hirnantwortmuster; Faktorenanalyse von fMRT-Datensätzen mit 1000 Versuchspersonen (Anderson et al, 2016; Chen et al., 2015)

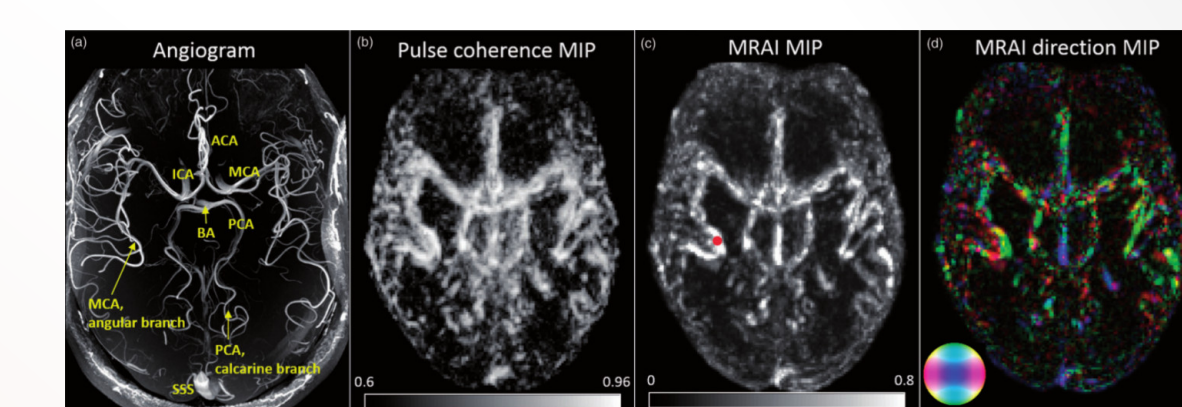
Ergebnisse aus unabhängigen Beiträgen



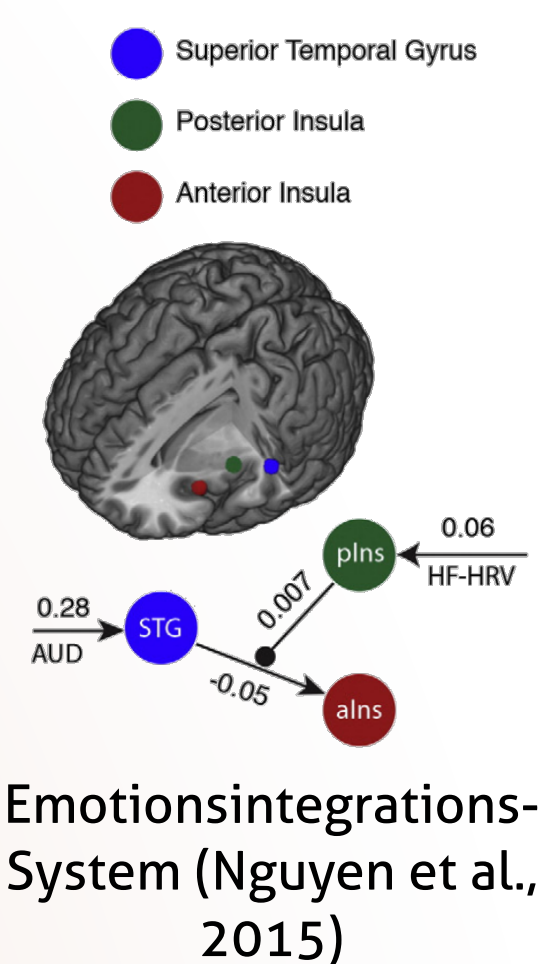
Charakterisierung von Hirnaktivierungsmuster-Strukturen mittels Deep-Learning (Güçlü et al., 2016)



Dekodierung der Repräsentation spektraler Soundkategorien bei komplexer natürlicher Stimulation (Hu et al., 2016)



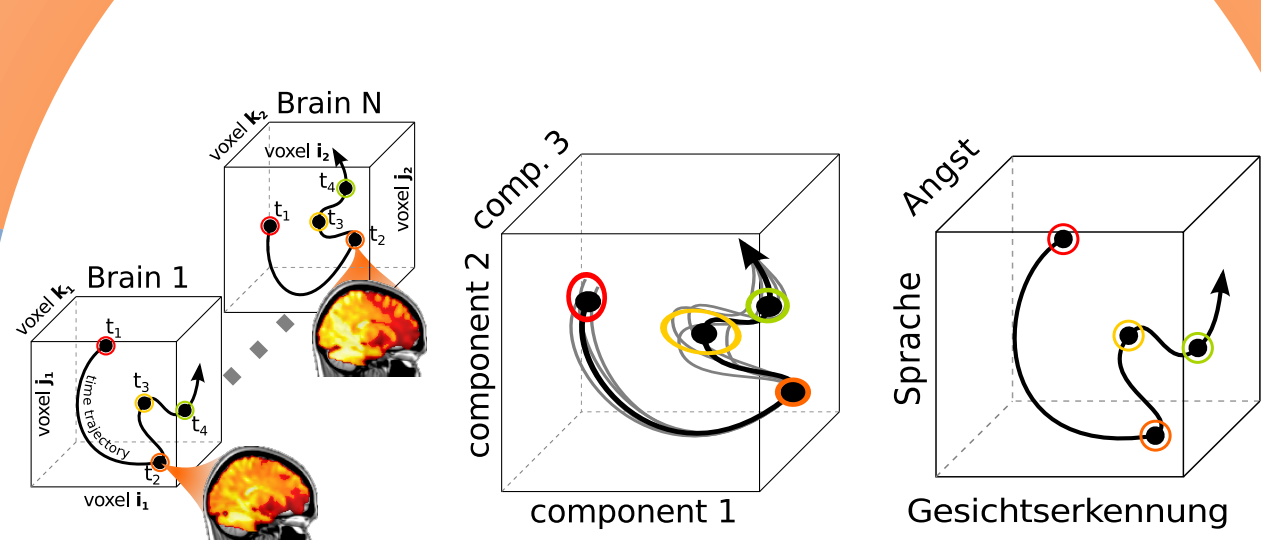
Rekonstruktion von Blutgefäßen und Flussrichtung aus fMRT-Daten (Voss et al., 2016)



Emotionsintegrations-System (Nguyen et al., 2015)

vielfältige, frei verfügbare Daten
für verteilte, nicht zentral koordinierte (Re-)Analyse

Ziel

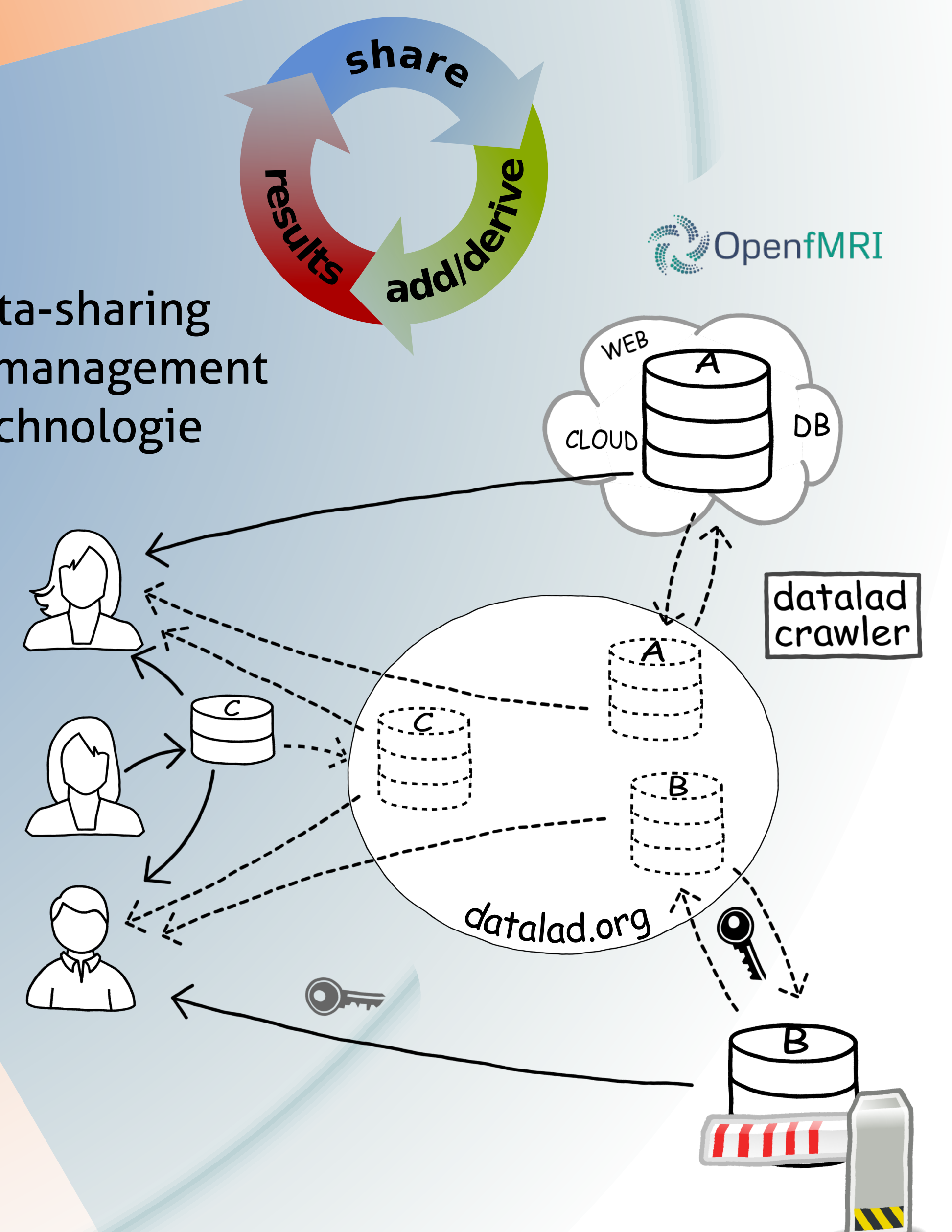


Hirnfunktionsatlas für
Alltagskognitionen

umfassende,
freie,
kostenlose
Forschungs-
Softwareplattform



Data-sharing
und -management
Technologie



Datalad

Häusler, C. (2016) Forrest Gump's world: Spatial perception and cognition during a Hollywood movie. *Master thesis*.
Häusler, C. O. & Hanke, M. An annotation of cuts, depicted locations, and temporal progression in the motion picture "Forrest Gump". *F1000Research*, 5:275.
Haxby, J. V., Guntupalli, J. S., Connolly, A. C., Halchenko, Y. O., Conroy, B. R., Gobbini, M. I., Hanke, M. & Ramadge, P. J. (2011). A common, high-dimensional model of the representational space in human ventral temporal cortex. *Neuron*, 72, 404-416.
Hu, X., Guo, L., Han, J., & Liu, T. (2016). Decoding power-spectral profiles from fMRI brain activities during naturalistic auditory experience. *Brain imaging and behavior*, 1-11.
Labs, A., Reich, T., Schulenburg, H., Boennen, M., Gehrke, M., Goltz, M., Hartings, B., Hoffmann, N., Keil, S., Perlow, M., Peukmann, A. K., Rabe, L. N., von Sobbe, F.-R. & Hanke, M. (2015). Portrayed emotions in the movie "Forrest Gump". *F1000Research*, 4:92.
Nguyen, V. T., Breakspear, M., Hu, X., & Guo, C. C. (2016). The integration of the internal and external milieu in the insula during dynamic emotional experiences. *NeuroImage*, 124, 455-463.
Nichols, T. E., Das, S., Eickhoff, S. B., Evans, A. C., Glatard, T., Hanke, M., Kriegeskorte, N., Milham, M. P., Poldrack, R. A., Poline, J.-B., Proal, E., Thirion, B., Van Essen, D. C., White, T., Yeo, B. T. T. (2015). Standards for Best Practices in Data Analysis and Sharing in Neuroimaging using MRI. *Commentary submitted to Nature Neuroscience*.
Sengupta, A., Kaul, F. R., Guntupalli, J. S., Hoffmann, M. B., Häusler, C., Stadler, J. & Hanke, M. A studyforrest extension, retinotopic mapping and localization of higher visual areas. *Scientific Data*. Accepted for publication.
Sengupta, A. (2016) The Effect of Acquisition Resolution and Magnetic Field Strength on Multivariate Decoding of fMRI. *PhD thesis*.
Voss, H. U., Dyke, J. P., Tabetow, K., Schiff, N. D., & Ballon, D. J. (2016). Magnetic resonance advection imaging of cerebrovascular pulse dynamics. *Journal of Cerebral Blood Flow & Metabolism*, 0271678X16651449.